

Cole Haan



SPRING 2010

SPRING 2010

THE INSPIRED LIFE

Cobbling together a life from what inspires you (family, friends, art, nature, community, competition, adventure, love) is the ultimate individual sport. We admire those who jump in with both feet, who seek out the sweet spot between ambition and satisfaction. The ones with a renegade sensibility, unwilling to settle for anything less than brilliant. So if the shoe fits...

Curious about who wears Cole Haan, we set off with "The Selby" to see our designs in action on interesting individuals. We hope you'll be as inspired as we were by their original approaches to life and style.

The Selby photographs creative people in their natural environments and documents how they live, work and think on his always evolving Web presence. Learn more about the individuals in this book at colehaan.com.



GWALTNEY CROSSBODY FLAP BAG (B27776) FEATHER NUBUCK, \$198
Smooth nubuck with canvas lining.

AIR GWALTNEY GLADIATOR (D30832) FEATHER NUBUCK, \$148
Smooth nubuck with leather sole and Nike Air.



AIR RENFROW BOOTIE (D30804) BLACK, \$228
Soft nappa with leather sole and Nike Air.

VALENTINE LARGE DUFFEL (B27800) BLACK NYLON/IVORY LEATHER, \$228
Lightweight nylon with smooth leather trim and blue canvas lining.



MARIA SHARAPOVA

TENNIS CHAMPION & DESIGNER* – LOS ANGELES

Inspired by: vintage design, competition,
photo books, modern architecture, street style

**She designed the shoes she's wearing as part of her collection for Cole Haan.*



AIR GWALTNEY OPEN-TOE PUMP (D30851) GUNMETAL, \$198
Subtly mirrored metallic leather. 4¼" stacked heel with a 1¼" platform and Nike Air.





Above, from left to right: AIR GWALTNEY GLADIATOR (D30832) FEATHER NUBUCK, \$148
 AIR GWALTNEY OPEN-TOE PUMP (D30851) GUNMETAL, \$198
 AIR RENFROW OPEN-TOE SLINGBACK (D31501) BLACK PATENT, \$178
 AIR BACARA BALLET (D30768) SILVER METALLIC, \$138
 AIR RENFROW PUMP (D31554) BLACK/PEWTER, \$198

Opposite: AIR RENFROW OPEN-TOE SLINGBACK (D31501) BLACK PATENT, \$178
 Sleek slingback with adjustable strap and Nike Air. 4¼" stacked heel with a 1¼" platform.





CRUSH (D31377) NATURAL CANVAS/WHISKEY, \$375
 Supple vegetable-tanned leather and pure cotton canvas, both crafted in Italy.

MAGDA WOSINSKA

PHOTOGRAPHER & RHYTHM GUITARIST – LOS ANGELES

Inspired by: spontaneity, my Polish heritage, heavy metal, skateboarding, my amazingly eclectic friends

FRAME (D31387) MAGENTA, \$150
 Hidden toe-ring sandal in supple, vegetable-tanned Italian leather with buffed footbed.

GIGGLE WATER (D31383) NERO, \$295
 Lightweight, flexible oxford in vegetable-tanned Italian leather.

KISSER (D31389) FATIGUE, \$150
 Cuffed toe-ring sandal in supple, vegetable-tanned Italian leather with buffed footbed.



GIN MILL (D31393) CARAMEL, \$295

Nicely detailed cap-toe oxford in vegetable-tanned Italian leather.

COLE, ROOD & HAAN MESSENGER (A10884) MIDNIGHT/CANVAS, \$595

AND DUFFEL (A10883) MIDNIGHT/CANVAS, \$895

American military tent canvas lined with cotton and trimmed in raw Italian vachetta.

UNISEX AVIATOR (SG0171) RHODIUM/ROSE, \$125

Metal frame with polished glass lens.



BREEZER (D31379) OCEAN BLUE, \$225

Boat shoe with hand-sewn construction. Vegetable-tanned leather in a modern hue.



AIR COLTON SADDLE (C08345) WHITE/NAVY/RED, \$198
The classic saddle oxford in hand-burnished calfskin,
lined with perforated leather, with Nike Air.



JAMES BOND

RETAILER, ENTREPRENEUR & FATHER – LOS ANGELES

Inspired by: the great outdoors, local art, the open road,
good sportsmanship, my kids (Jersey and Ace), my grandfather

AIR COLTON WINGTIP OXFORD (C08435) BRITISH TAN CALF, \$198
Hand-burnished calfskin lined with perforated leather, with Nike Air.



AIR COLTON PLAIN OXFORD (C08190) MILKSHAKE, \$198
Plain-toe suede oxford lined with perforated leather, with Nike Air.





Left: **AIR COLTON SPLIT-TOE OXFORD (C08188) BLACK, \$198**
Versatile split-toe oxford in hand-burnished calfskin lined with perforated leather, with Nike Air.

Below: **AIR GRIFFEN (C08218) CHOCOLATE MESH/BURNT ORANGE;**
(C08219) BURNT ORANGE MESH/NAVY, \$148
A high-performance combination of mesh and leather with a durable waffle latex sole and Nike Air.

Opposite: **AIR MARCUS SPORT OXFORD (C08147) CHESTNUT/RED, \$158**
A sporty, leather-lined oxford in supple leather and Nike Air.





Opposite: **EVE SOFT TOTE** (B28151) SADDLE, \$448
 Indisputably classic. Handwoven leather with smooth trim and functional interior pockets.

COTTON RAINCOAT (G19521) NAVY, \$395
 Double-breasted with back half-belt, pleat detail and welt pockets. Half lined.

VERONA AIR T-STRAP (D30638) WOODBURY, \$298
 Hand-painted oiled vachetta leather with Nike Air. 3¾" stacked heel.



Above: **VERONA AIR T-STRAP** (D30638) WOODBURY, \$298
 Hand-painted oiled vachetta leather with Nike Air. 3¾" stacked heel.

Left: **BUTTERFLY SUNGLASSES** (SG0176) BERRY, \$75
 Oversized frame with logo plaque and smoke-purple lens.

WASHED LEATHER JACKET (G19515) SANDSHELL, \$695
 Supersoft with lightweight cotton lining. Zip-open sleeve vents.

AIR JOCELYN HIGH SANDAL (D31176) WOODBURY/BIRCH, \$228
 Woven oiled vachetta leather with functional buckle and Nike Air.



NICOLA VASSEL

CURATOR & GALLERY DIRECTOR – NEW YORK CITY

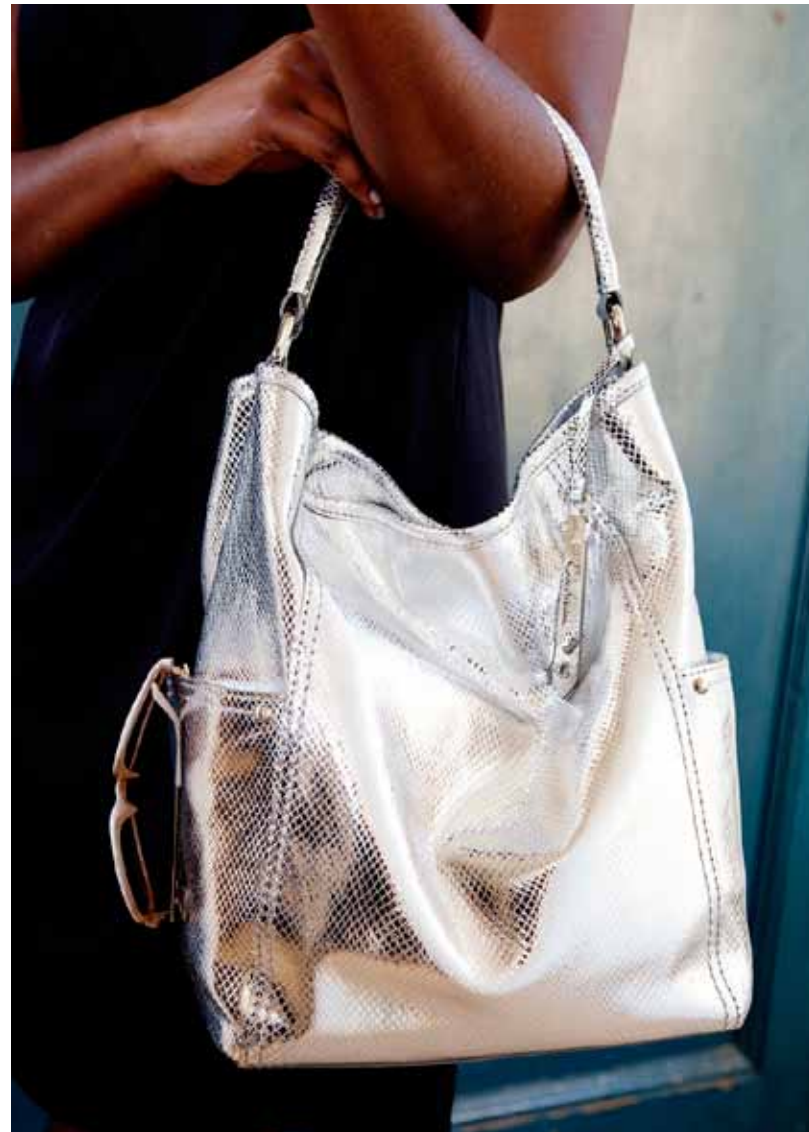
Inspired by: artists of every stripe, my mother's grace, serendipity, Neoclassical painting, Jamaican food, urban energy, salsa dancing

Below left: AIR MIRANDA PUMP 90 (D30641) WOODBURY, \$198
Oiled vachetta with flexible, non-slip sole and concealed Nike Air. 3½" heel.

Below right: VILLAGE HOBO BAG (B28531) ARGENTO SNAKE PRINT, \$378
Elongated hobo in our distinctively textured signature leather.

Opposite: MEN'S METAL AVIATOR (SG0055) GUNMETAL, \$125
Metal aviator-style frame with smoked glass lens.

WOMEN'S PLASTIC AVIATOR (SG0195) LEMONADE, \$85
Plastic aviator-style frame with brown lens.



AIR MERCURY SPORT OXFORD (C08201) NAVY; (C08199) CUOIO, \$98
Supple leather with rubber sidewall foxing and Nike Air.

UNISEX AVIATOR (SG0171) GUNMETAL, \$125
Metal frame with polished glass lens.



JOHNNY KNAPP

RETAILER, WRITER & SURFER – BELLPORT, NEW YORK

Inspired by: the surf, creative expression, untarnished ideals,
cross-pollination, community, hope, my family



AIR COLTON PLAIN OXFORD (C08191) DARK BROWN, \$198
Dark and handsome oxford lined with perforated leather, with Nike Air.

AIR COLTON PLAIN OXFORD (C08191) DARK BROWN; (C08190) MILKSHAKE, \$198
AIR COLTON WINGTIP OXFORD (C08435) BRITISH TAN CALF, \$198

Below: PORTAGE SLING DUFFEL (A10853) DARK BROWN, \$498
Slouchy design in subtly textured vachetta leather with double zip closure.





Opposite: **PHOEBE LARGE SLOUCHY HOBO (B28034) WASHED ARGENTO, \$398**
Washed lambskin with a silvery glow and braided edging.

AIR ASTRID BALET (D30571) FEATHER NUBUCK, \$148
Supersoft nubuck with elastic detail and mini stacked heel with Nike Air.

Below: **RALEIGH WHIPSTITCH TOTE (B28438) WOODBURY NUBUCK, \$398**
Supersoft nubuck with hand-sewn whipstitching and unlined interior with functional pockets.



HARLEY VIERA-NEWTON

DJ, MUSICIAN & STUDENT – NEW YORK CITY

Inspired by: my parents, the pyramids of Egypt, vintage fashion,
the Museum of Natural History, late nights



Opposite: **RALEIGH WHIPSTITCH SMALL CROSSBODY FLAP (B28437)** WOODBURY NUBUCK, \$298
Supersoft nubuck with hand-sewn whipstitching.

GROMMET SKINNY BELT (B27963) ORANGE, \$48
Smooth leather with grommet detail and nubuck lining.

AIR JOCELYN OPEN-TOE WEDGE (D30925) BIRCH NUBUCK, \$198
Supersoft nubuck. 3" cork wedge with classic espadrille detail and Nike Air.

Below: **EVE SOFT TOTE (B28151)** SADDLE, \$448
Indisputably classic. Handwoven leather with smooth trim and functional interior pockets.



AIR WHITNEY HIGH SANDAL (D31556) BLACK, \$228

Sleek oiled vachetta with bold grommet detailing in soft gold, with Nike Air. 3¾" stacked heel.

Opposite: **AIR WHITNEY GLADIATOR (D30568) WOODBURY/BIRCH, \$148**

Oiled vachetta with padded leather lining and comfortable rubber sole with Nike Air.





MARLEE MOCCASIN (D30715) FEATHER CROC-EMBOSSED, \$178
Croc-embossed metallic leather injects new style into classic penny loafer details.



AKIKO STEHRENBARGER

ILLUSTRATOR & ARTIST – LOS ANGELES

Inspired by: my peaceful home, combining art and work, the woods, exotic travel, amusing others

JON MANHEIM

GRAPHIC DESIGNER, ART DIRECTOR & SURFER – LOS ANGELES

Inspired by: Indonesia, legit LA culture, movies, island living, simplicity, autonomy, the ocean

Clockwise from top left: **AIR HALSLEY THONG** (D30502) BIRCH, \$148
Full-grain leather with lovely flower detail, soft gold buckle and Nike Air.

HALSLEY STRAW TOTE (B28195) NATURAL/BIRCH CROC PRINT, \$198
Finely woven straw trimmed with embossed nubuck. Detachable flower detail.

AIR PHOEBE SANDAL (D31048) SANDALWOOD/PLATINO, \$168
Braiding with knot-and-rope detail in soft suede with metallic leather trim and Nike Air.

AIR PENNY DRIVER (D30776) BIRCH NUBUCK, \$178
Smooth nubuck with padded leather lining. Flexible rubber sole with Nike Air.



Left: **AIR COLTON SPLIT-TOE OXFORD** (C08188) BLACK CALF, \$198
Versatile split-toe oxford in hand-burnished calfskin lined with perforated leather, with Nike Air.

Below: **AIR CADEN WINGTIP OXFORD** (C08220) BLACK/BLUE, \$198
Casual wingtip oxford in unique two-tone brush-off finish, with flexible, lightweight sole and Nike Air.





Opposite: AIR YACHT CLUB BOAT (C08144) NAVY, \$148
Authentic two-eyelet design in soft leather, with leather lining and Nike Air.

TECHNICAL SPORT JACKET (G49517) ORANGE, \$295
Lightweight, water-resistant Tyvek® with silver mesh lining. Concealed hood in collar.

PORTSMOUTH DUFFEL (A10863) NAVY/WHITE STRIPE, \$298
Sparty duffel in washed cotton canvas.

Below: AIR BLAINE VENETIAN (C08341) RED/YELLOW/BLUE/WHITE PLAID, \$148
Cotton with leather trim, jute sidewall foxing lined with perforated leather, with Nike Air.



MOSES BERKSON

PHOTOGRAPHER & FILMMAKER – LOS ANGELES

Inspired by: parenthood, road trips, music on vinyl,
Mother Nature, collecting books, crazy restaurants

Clockwise from top left: **PENLEY BELT** (A34648) CUOIO, \$68
Edge overlay design detail. Polished nickel buckle. 1¼" width.
YATES BELT (A34676) OFF-WHITE/NAVY, \$58
Vintage-inspired tab design. Matte nickel buckle. 1½" width.

AIR GRANT (C08319) PAPAYA, \$138
Hand-sewn construction in waxy, full-grain leather.
Flexible, nubby rubber sole with Nike Air.

PORTAGE MONEY CLIP CARD CASE (A82904) LUGGAGE, \$55
Secure magnetic money clip card case in soft vachetta leather.

PORTAGE BI-FOLD WALLET (A82905) LUGGAGE, \$85
Soft vachetta leather with 6 card pockets, 4 slide pockets and a currency sleeve.

FELIPE THONG (C08320) T MORO CROC PRINT, \$98
Richly burnished, croc-embossed leather.



AIR BLAINE PENNY (C08128) NAVY, \$158
Sporty loafer in soft leather with sidewall foxing, perforated leather lining and Nike Air.

PUSHOVER (C08334) COGNAC/VIOLET, \$325

Italian leather oxfords with sturdy Goodyear welted construction. Unlined.



STORE LISTINGS

ARIZONA

Phoenix, Biltmore Fashion Park 602.955.8686
Tucson, La Encantada 520.577.0600

CALIFORNIA

Canoga Park, Topanga Plaza 818.716.8170
Carmel, Carmel Plaza 831.624.2650
Costa Mesa, South Coast Plaza 714.751.7370
Glendale, Americana at Brand 818.242.7424
Los Angeles, Century City 310.553.4800
Palm Desert, The Gardens of El Paseo 760.779.9321
San Francisco, Union Square 415.391.1760
San Jose, Santana Row 408.615.7724
Walnut Creek, Broadway Plaza 925.930.8856

COLORADO

Denver, Cherry Creek 720.941.2685

CONNECTICUT

Farmington, Westfarms Mall 860.521.0324
Greenwich, Greenwich Avenue – Opening Summer 2010

FLORIDA

Aventura, Aventura Mall 305.931.0125
Boca Raton, Town Center 561.347.1211
Coral Gables, Village of Merrick Park 305.442.0882
Ft. Lauderdale, Galleria 954.566.5756
Jacksonville, St. Johns Town Center 904.807.9936
Naples, Waterside Shops 239.591.0018
Orlando, Mall at Millenia 407.248.8388
Palm Beach Gardens, The Gardens Mall 561.625.8466
Tampa, International Plaza 813.353.1010

GEORGIA

Atlanta, Phipps Plaza 404.233.6634

HAWAII

Honolulu, Ala Moana 808.941.1270

ILLINOIS

Chicago, Michigan Avenue 312.642.8995
Northbrook, Northbrook Court 847.753.9030
Schaumburg, Woodfield Mall 847.330.9715

INDIANA

Indianapolis, Keystone Crossing 317.810.0160

MARYLAND

Chevy Chase, Wisconsin Place 301.654.9122

MASSACHUSETTS

Boston, Newbury Street 617.536.7826
Boston, The Mall at Chestnut Hill 617.965.2661
Burlington, Burlington Mall 781.272.2097

MICHIGAN

Troy, The Somerset Collection 248.816.6947

MINNESOTA

Edina, Galleria III 952.920.9377

MISSOURI

Kansas City, Country Club Plaza 816.561.1614
St. Louis, Plaza Frontenac 314.997.3460

NEVADA

Las Vegas, Fashion Show Mall 702.731.3522
Las Vegas, The Shoppes at The Palazzo 702.369.2381

NEW JERSEY

Hackensack, The Shops at Riverside 201.518.0256
Short Hills, The Mall at Short Hills 973.218.1133

NEW YORK

Garden City, Roosevelt Field 516.877.1377
Manhasset, Americana Manhasset 516.627.6820
New York, Columbus Circle 212.823.9420
New York, Flatiron 212.677.4693
New York, Madison Avenue 212.421.8440
New York, Rockefeller Center 212.765.9747
New York, SoHo – Opening Summer 2010
White Plains, The Westchester 914.997.7480

NORTH CAROLINA

Charlotte, South Park Mall 704.367.9393
Durham, Streets at Southpoint 919.361.3600

OREGON

Portland, Bridgeport Village 503.684.1504

PENNSYLVANIA

King of Prussia, King of Prussia Mall 610.992.1062
Philadelphia, Walnut Street 215.985.5801

TENNESSEE

Nashville, The Mall at Green Hills 615.292.9930

TEXAS

Austin, The Domain 512.834.8222
Dallas, Highland Park Village 214.522.5396
Dallas, Northpark 214.750.3694
Houston, Galleria 713.877.0020
Houston, Highland Village 713.877.1173
San Antonio, La Cantera 210.558.6710

VIRGINIA

Arlington, Pentagon City 703.415.0006
McLean, Tysons Galleria 703.506.2115
Richmond, Stony Point Fashion Park 804.323.3464

WASHINGTON

Seattle, University Village 206.527.3069

CANADA

Toronto, Bloor Street 416.926.7575

For a complete listing of our global store locations, please visit colehaan.com

COLE HAAN
45 WEST 18TH STREET
3RD FLOOR
NEW YORK, NY 10011

PRST STD
US POSTAGE
PAID
COLE HAAN

On the cover: **AIR VALENTINE GLADIATOR** (D30856) WHITE PATENT, \$148
Patent leather with bungee cord lacing and Nike Air are a modern combination.

This page: **VINEYARD THONG** (D30708) CRYSTAL PINK PATENT; (D30707) LEMONADE PATENT; (D30705) BLUEBELL PATENT; \$98

Patent leather with leather lining and sole. Shiny nickel rivets.



Please recycle this catalog.

